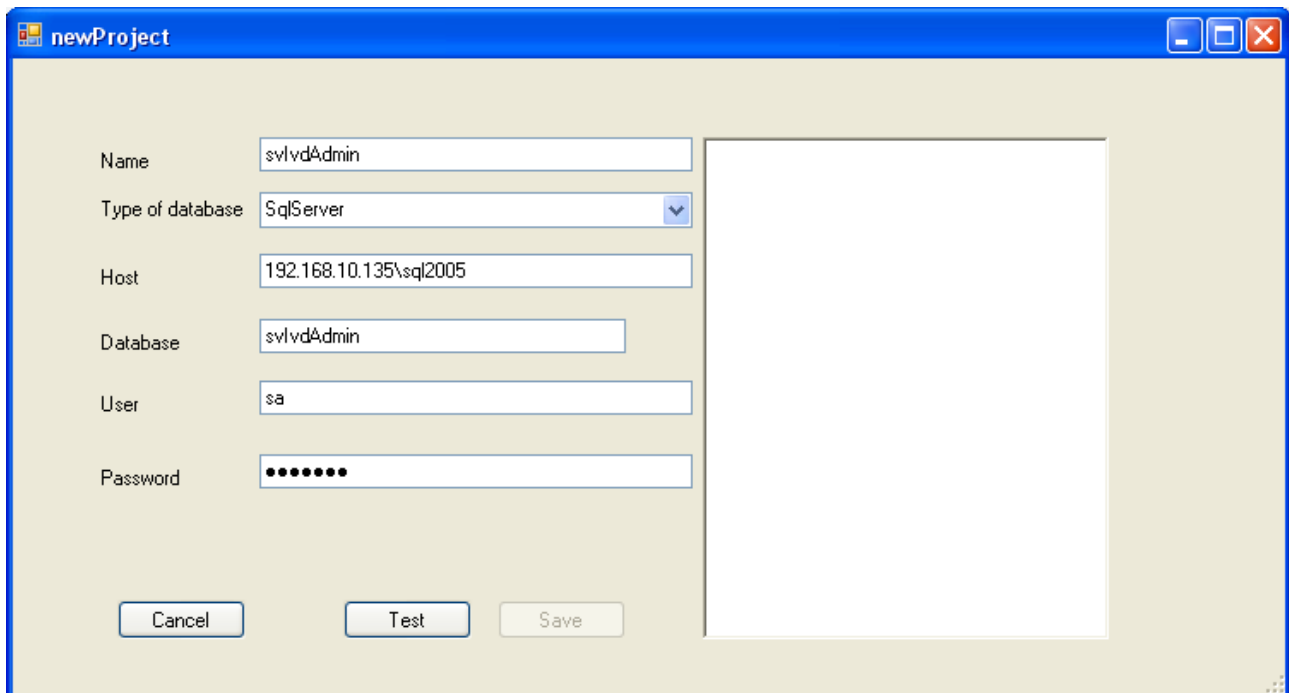


Lets create a new project in myWay.

Click on "new project" and fill data:



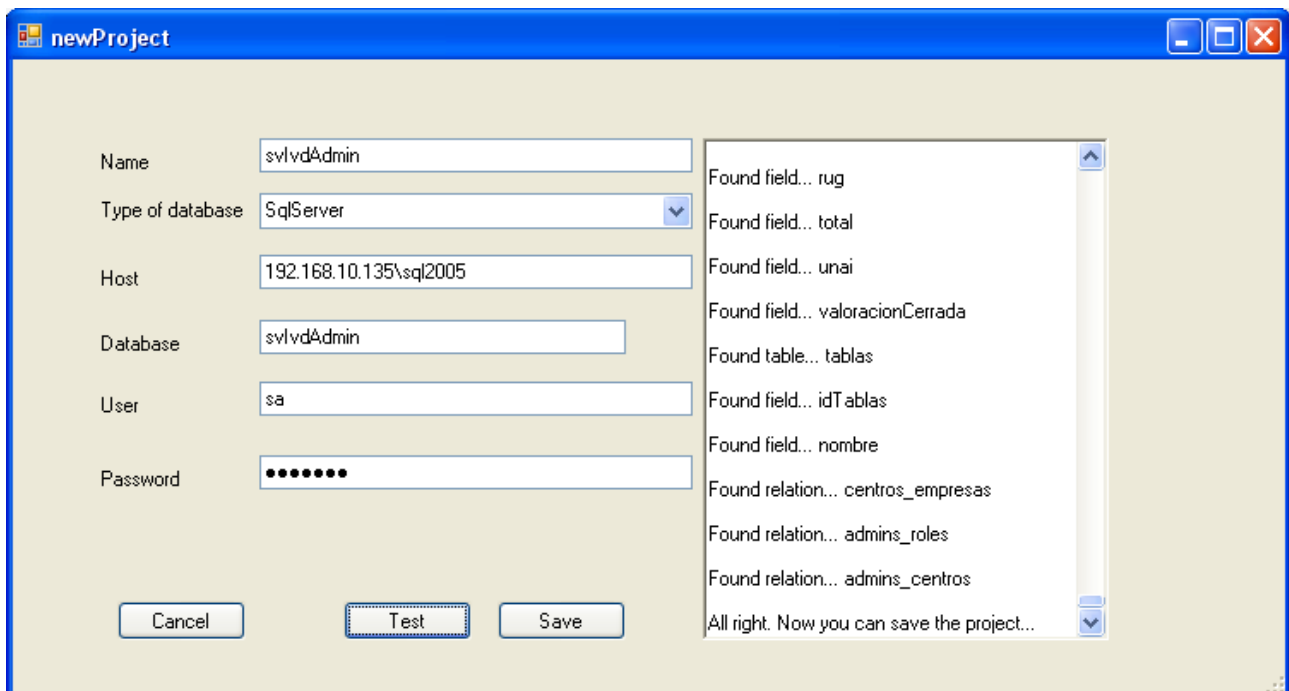
The 'newProject' dialog box is shown with the following fields and values:

Field	Value
Name	svlvdAdmin
Type of database	SqlServer
Host	192.168.10.135\sql2005
Database	svlvdAdmin
User	sa
Password

Buttons at the bottom: Cancel, Test, Save.

in this sample we want to connect to the database svlvdAdmin in the sql server in 192.168.10.135\sql2005 (its called \sql2005 cause i have some instances in my server).

Well, click on "test" and if all its right, it connects and gets the metadata, when it finish it says "All right" and then you have to click on "Save"



The 'newProject' dialog box is shown with the following fields and values:

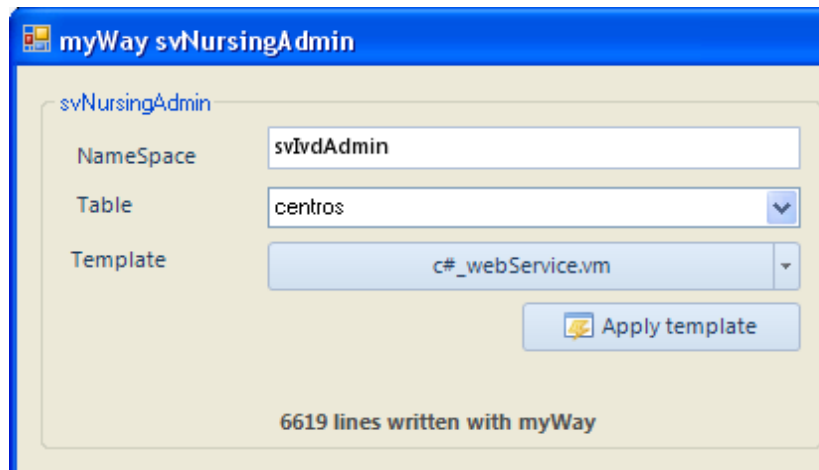
Field	Value
Name	svlvdAdmin
Type of database	SqlServer
Host	192.168.10.135\sql2005
Database	svlvdAdmin
User	sa
Password

Buttons at the bottom: Cancel, Test, Save.

Found fields and tables:

- Found field... rug
- Found field... total
- Found field... unai
- Found field... valoracionCerrada
- Found table... tablas
- Found field... idTablas
- Found field... nombre
- Found relation... centros_empresas
- Found relation... admins_roles
- Found relation... admins_centros
- All right. Now you can save the project...

it take us to the principal form and we can see in the combo of tables that the tables of the database appears, in this sample you can see a table called centros...

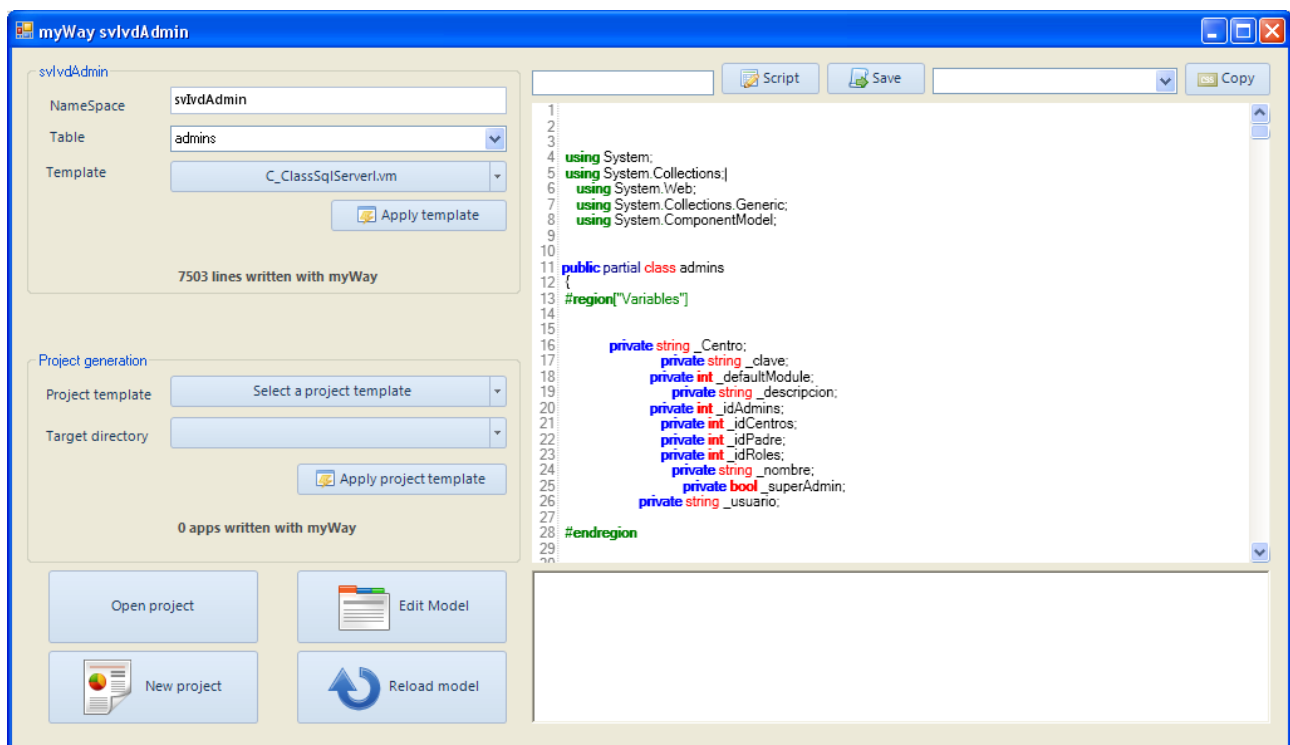


lets see what we can do with a table...

Utilizar un template para crear una clase

Lets do the "same old song", lets create an object class but this time with myWay...

Click on Template and select the next template: "c# / c_classSqlServer.vm", after that click no "Apply template" button and voila...



Of course the code its adapted to my needs, but its so simple to edit the templates..

Using a template to use a gridview

Click on the button "Template" and select the template "c# gridview.vm", after that click on "Apply

template" and you got the code to fill and control a gridview for the table "centros"

Editing the model

Its not necessary have a database, we can create the model from scratch, do click on Edit Model

Extended properties:

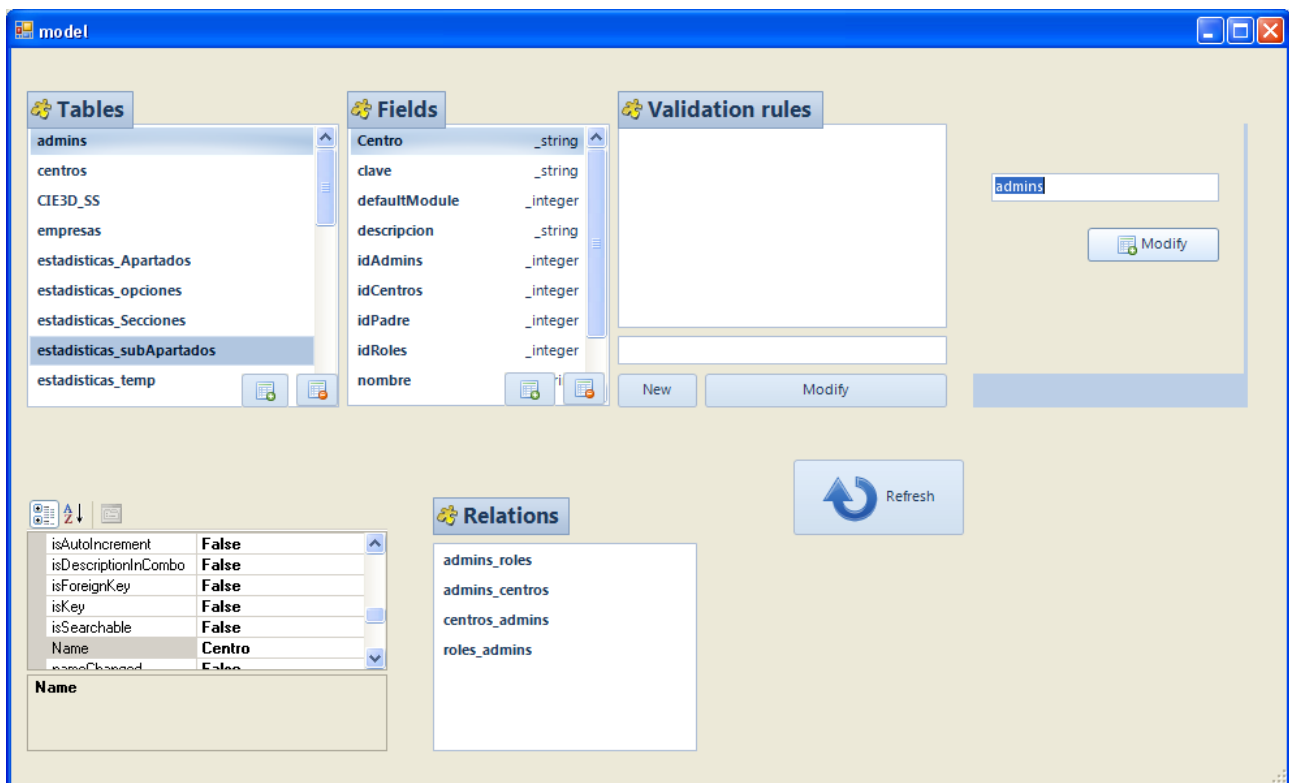
We will use the description of the fields in the database to extend the properties of a field

For example, if we want a field to be an image, put #image# in the description property and the code generated will change to an image field...

otros campos descriptores son:

#image# - imagen

#doc# documento



#audio# audio

#video# video

#desc# este campo será el utilizado en los combos para mostrar texto...

#money#

#hide#